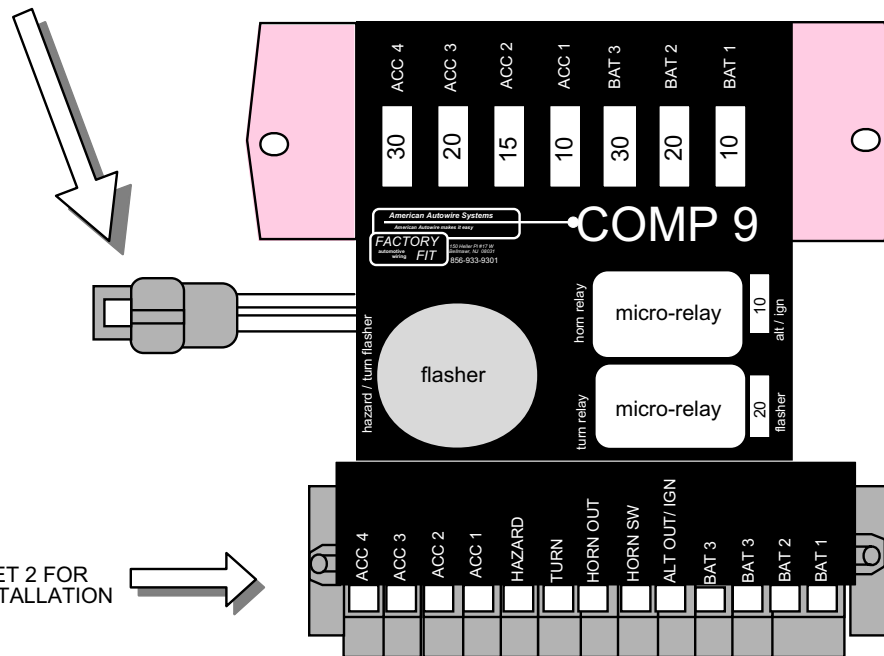


The fuse values that are provided with the panel, and are noted below, may not be correct for the circuit that is being connected to it. It is the users responsibility to use the correct rated fuse for the circuit load.

<u>CIRCUIT</u>	<u>FUSE</u>	<u>FUNCTION</u>
ACC 4	30	Accessory power 12 volt (key on)
ACC 3	20	Accessory power 12 volt (key on)
ACC 2	15	Accessory power 12 volt (key on)
ACC 1	10	Accessory power 12 volt (key on)
HAZARD	20 mini	Connect to turn signal switch - hazard feed
TURN		Connect to turn signal switch - turn feed
HORN OUT		To horn
HORN SW		To horn switch (button)
ALT/OUTIGN	10 mini	To alternator - excitor feed wire
		This location can also be used as an IGNITION feed for any other accessories that may require an ignition power source.(NOTE: If using for alternator excitor feed, a diode is provided and must be used in place of the 10 AMP fuse. Do not leave key in "on" position without car running.)
BAT 3	30	Battery power 12 volt
BAT 2	20	Battery power 12 volt
BAT 1	10	Battery power 12 volt

RED To 12 volt battery source
 BROWN To IGNITION switch - accessory terminal
 PINK To IGNITION switch - ignition terminal
 BLACK To a good chassis GROUND



SEE SHEET 2 FOR WIRE INSTALLATION

another wiring product by...



**American
Autowire**

We Make Wiring Easy!!

150 Heller Pl #17 W Bellmawr, NJ 08031 856-933-9301
 www.americanautowire.com www.factoryfit.com

PART #

500345

DESCRIPTION:

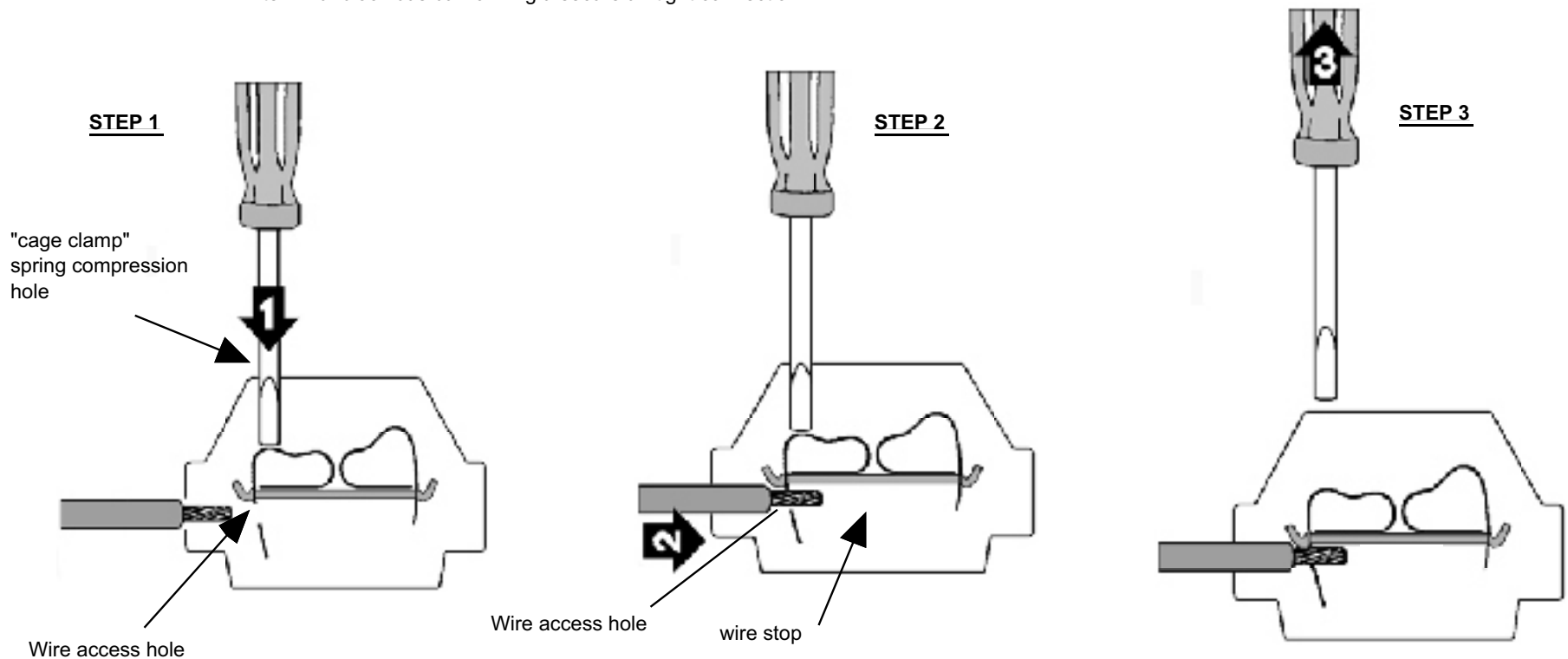
COMP 9

FUSE PANEL

92964885 instruction sheet Rev 1.0 8/1/02

CONNECTING WIRE TO THE "CAGE CLAMP" TERMINAL BLOCK

1. Insert a 1/8" blade screwdriver into the "cage clamp" spring compression hole located in the top of each terminal block as shown in STEP 1.
2. Push down on the spring until the "wire access hole" in the spring is visible through the side of the terminal block.
3. While maintaining tension on the spring, insert the wire into the terminal block through the "wire access hole" in the "cage clamp spring" until the wire hits the wire stop as shown in STEP 2. Be sure that the wire is stripped to 1/4" - 5/16" and that the wire strands are not frayed before insertion into the terminal block. The wire should slide in without restriction.
4. With the wire firmly positioned in the terminal block, release the tension on the screwdriver and withdraw it as shown in STEP 3. The wire is now firmly compressed against the terminal block bus bar forming a secure air tight connection.



COMP 9
FUSE PANEL

PART #

500345